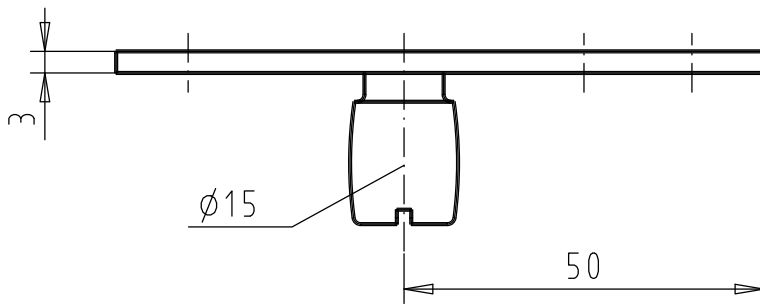
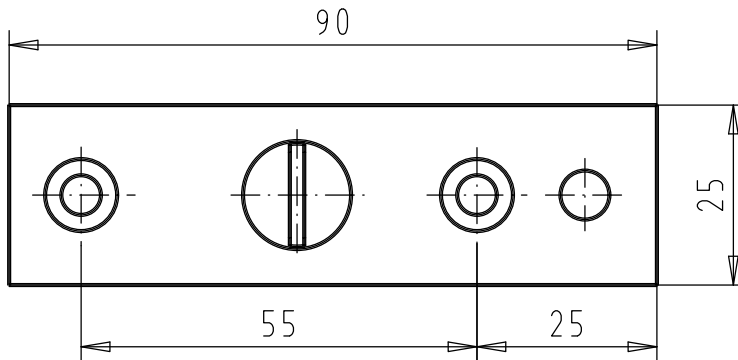
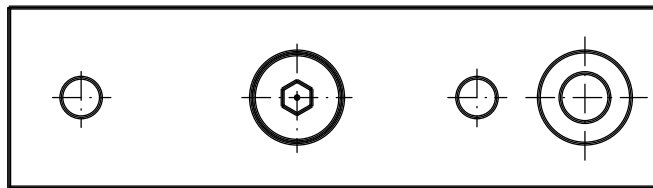


PT24/15  
15mm Drehpunkt  
30.610.0000.426



PT24  
55/65mm Drehpunkt  
30.126.0000.426



<b>WSS</b> WILH. SCHLECHTENDAHL & SÖHNE GMBH & CO.KG	Maßstab 1:1		Prof.-Serie	
	Kom.			
Informations- blatt	Bearb.	Datum 14.08.02	Name RADZI	Anschraubplatte kpl.Niro mit 15mm Drehachse f. Holzarge
	Gepr.			
	pass. für			
	WSS-Nr.	30.126.-- 30.610.--	Ident-Nr.	55377
	Kunde	alte Zchnng.-Nr.		Bemerkung